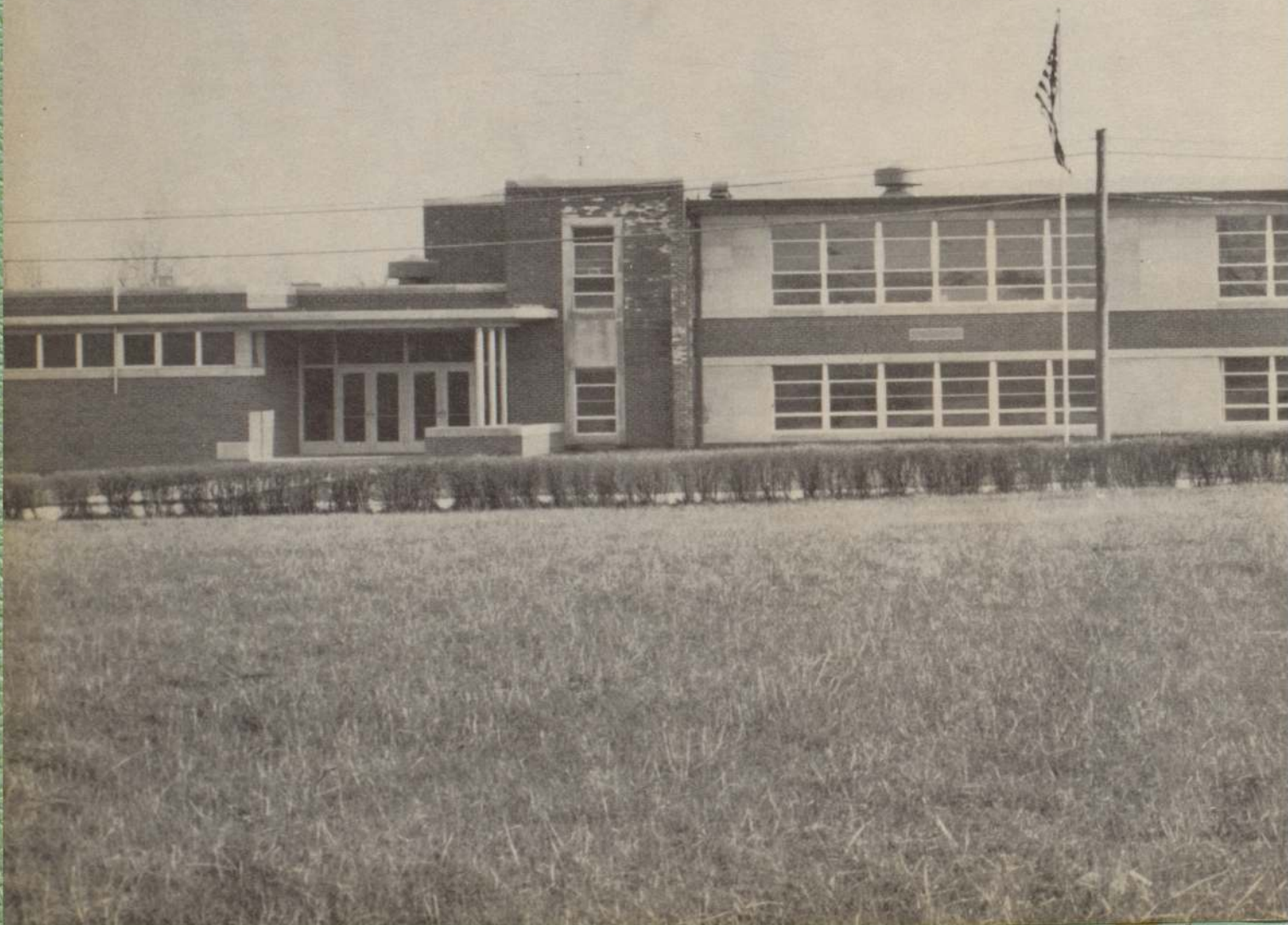
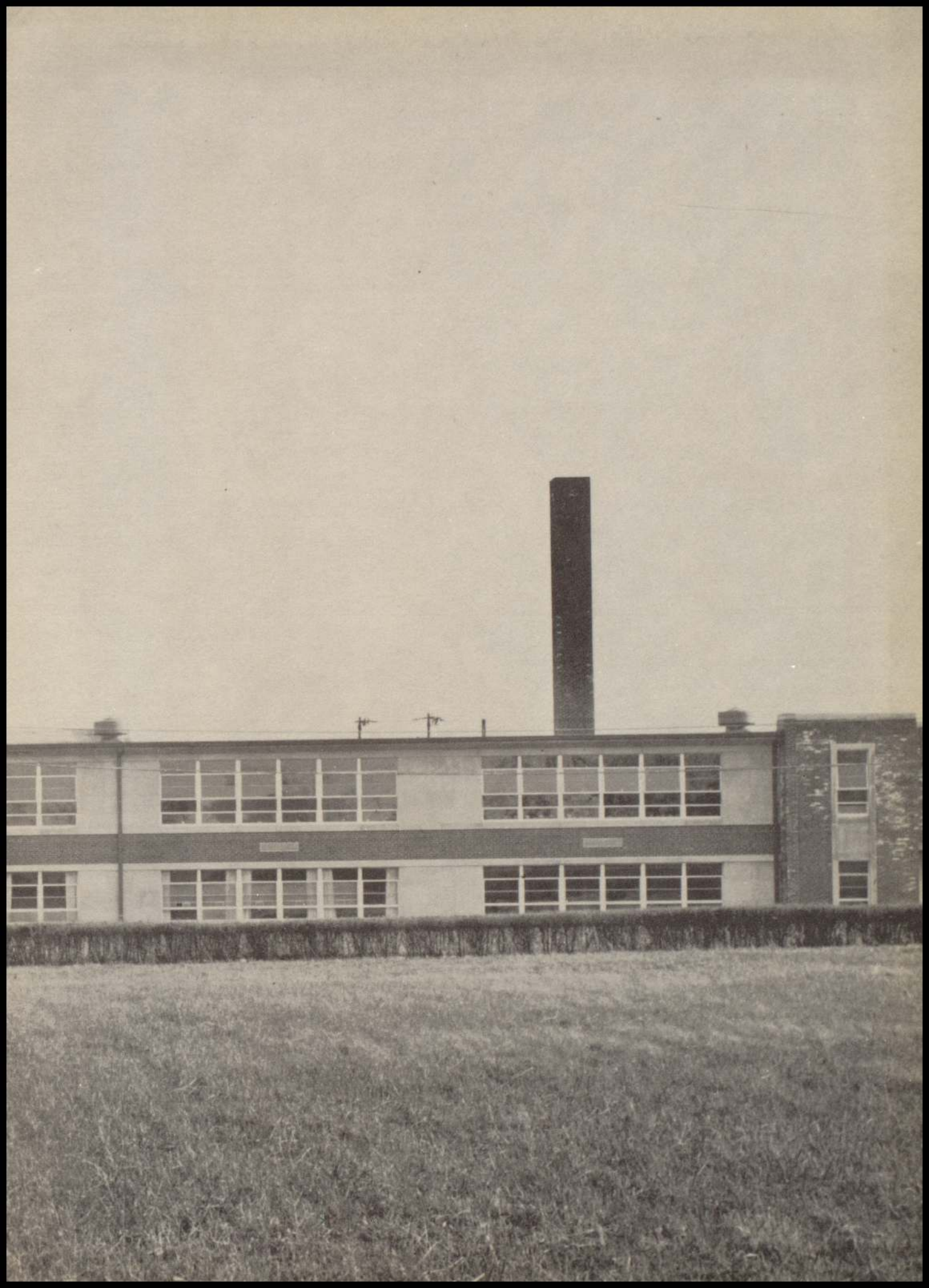




THE HILLTOPPER





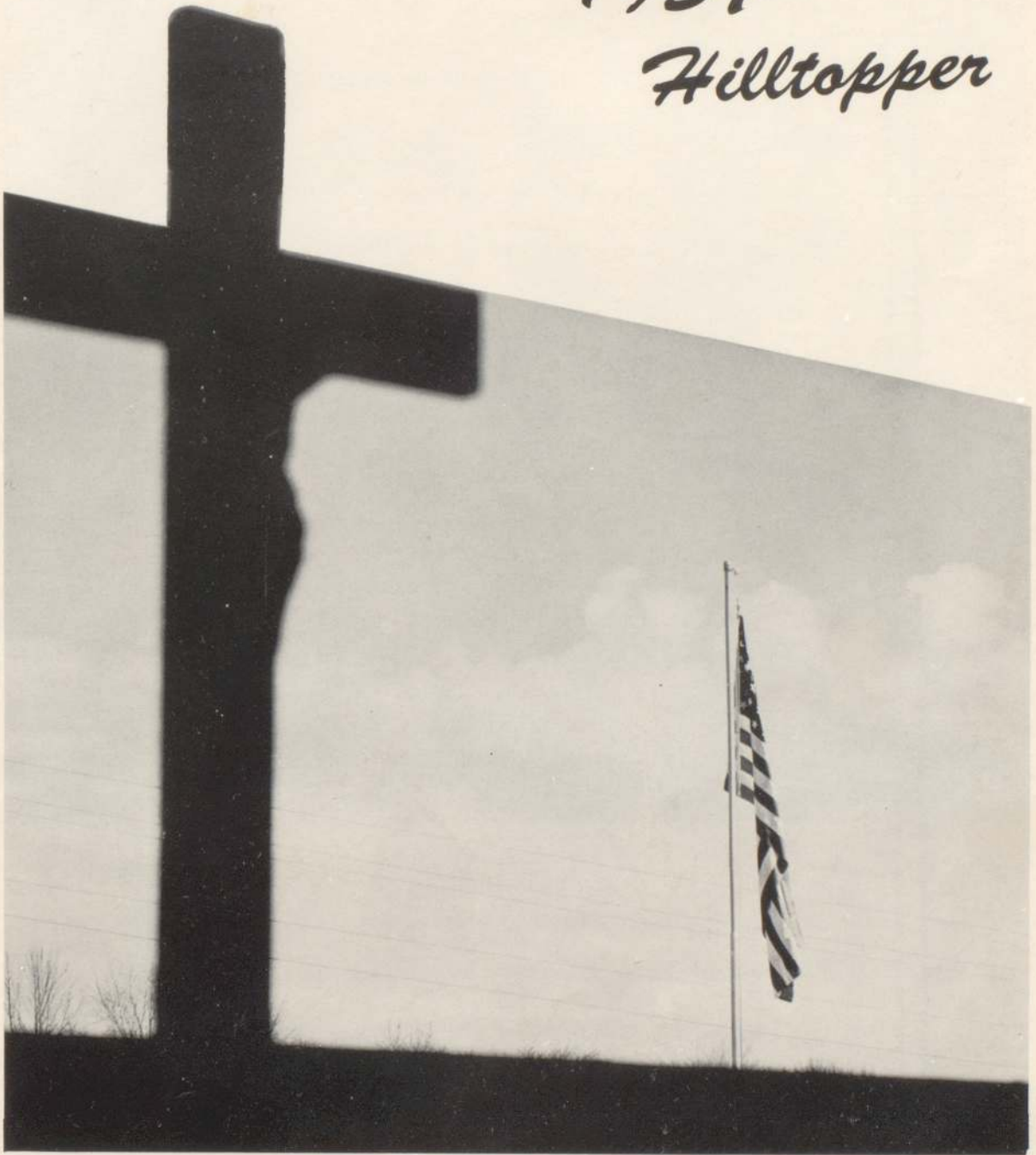
The Senior Class
of

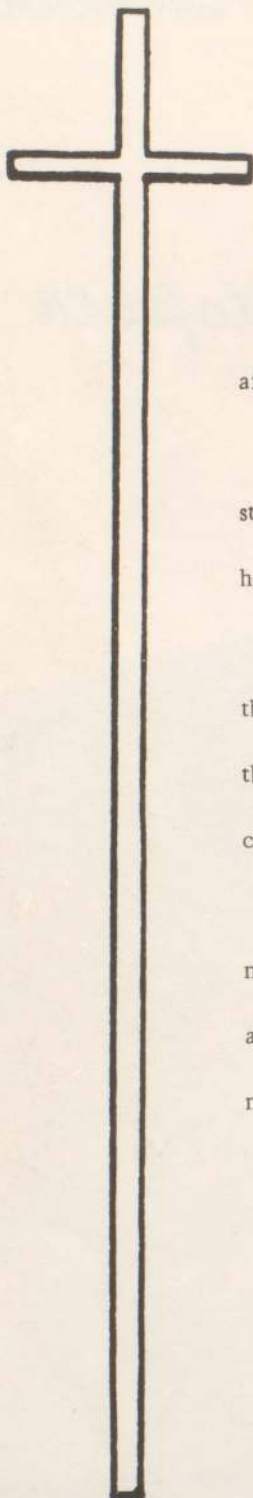
Shawe Memorial High School
Madison, Indiana

presents the

1957

Hilltopper





FOREWORD

The Cross and the Flag symbolically portray the aim of education at Shawe.

The Cross signifies Christ, the preparing of the student for what he must be and for what he must do here on earth in order to obtain his last end - God.

The Flag signifies our country, the preparing of the student in knowledges, skills, and appreciations that will fit him to be an intelligent, good American citizen.

Throughout the pages of the 1957 Hilltopper, the meaning of these symbols is recalled through the activities of the students who strive to live their meaning.





DEDICATION

This book has been proudly dedicated to our good and loved friend, Father Albert Deitzman, who has been a great help and boost to our school in its primary years.

The Senior Class of 1957



FATHER HILARY
MENY
Superintendent
Religion

SISTER GEORGE
MARIE
Principal
English, Latin



FATHER DAVID
SENEFELD
Athletic Director
Religion

FATHER ALBERT
AJAMIE
Religion

JOHN DWYER
Coach
Health, Safety

SISTER M.
BENEDICTA
Art, History,
Spanish



SISTER M.
DOLORETTA
Science, Math

SISTER M.
ETHELREDA
Commercial
French

SISTER M.
EILEEN
Music

SISTER M.
AUSTIN
Librarian

A decorative graphic consisting of two vertical lines and a diamond shape. The diamond is light gray and is positioned behind the letter 'S'. The lines are also light gray and run vertically down the page.

Seniors

Senior Class Officers



President

RONALD KNOEBEL
1-2-4 Class President; 1-2
Student Council; 1 Basket-
ball and Track; 3 Vice
President CSMC and Class;
1-2-3-4 CSMC; 2-3-4
CYO; 4 Yearbook; 1-2
Choral Club.

Vice President

RONALD KING
1-2-3-4 Basketball; 2-3
Track; 1 Student Council;
1 CSMC President; 1-2-3-4
CSMC; 2-3-4 CYO; 1-2
Choral Club.

Secretary

CAROLYN CERTH
2-3-4 Choral Club; 2-3-4
CSMC; 3 Student Council;
2-3-4 CYO; 4 Pep Club.

Treasurer

MARY CATHERINE BEHR
1 Cheerleader; 1-2-3 Choral
Club; 1 Class Secretary; 3-4
Yearbook; 1-2-3-4 CSMC;
2-3-4 CYO.



JOAN ANGER

1-2-3 Choral Club; 2-4
CSMC Treasurer; 4 Year-
book; 1 Class Treasurer;
1-2-3-4 CSMC; 2-3-4
CYO; 4 Pep Club.



GEORGE DAHLEM

1-2 Choral Club; 1-2-3-4
CSMC; 2-3-4 CYO.



MICHAEL DATTILO

1-2-3-4 Basketball; 2-3-4
Track; 3 CSMC Pres. ;
2-3 Band; 1-2 Baseball.



PAUL FEWELL

1-2-3-4 Track; basketball;
1-2 Baseball; 3 CSMC
Treasurer; 2-3 Choral club.



JUDY HAMILTON

3 Band; Choral Club; 4
Class mission president;
3-4 CSMC.



ANN HILLEN

2-3 Choral Club; 2-3-4
CSMC; 3 Class Secretary;
Band; Student Council;
4 Pep Club; 1-2-3-4 CYO.



LARRY HOAGLAND
1 Basketball; 1-2 choral
club; 2 Track; 1-2-3-4
CSMC.



MARTHA HUNGER
1-2-3 choral club; 3 band;
4 pep club; class mission
treasurer.



MARY ANN HUNGER
1-2-3 choral club; 1-2-3-4
CSMC; 2-3-4 CYO; 4 pep
club.



BOB KIRCHNER
3-4 track; 4 basketball;
3-4 CYO; 3-4 CSMC.



PAUL MESSMORE
1-2-3-4 basketball; 1-2-3-
4 track; 3 choral club; 3
class vice president.



MARGARET NORRIS
3 choral club; 3-4 band;
4 yearbook; 1-2-3-4 CYO;
2-3-4 CSMC.

JIMMY ROWLETT

1 Basketball; 2 track; 1-2-3-4 CSMC.

GERALD SELIG

4 yearbook editor; 3-4 CSMC.



RITA SOMMER

2-3 choral club; 3-4 band; 2 CSMC Secretary; 3 class president; 4 CSMC president; 4 yearbook.



GEORGE THORPE

1-2-4 Basketball; 1-2 Baseball; 2-3 Track; 1-2-3-4 CSMC.



BOB SCHUMAKER

4 CSMC; 3-4 CYO.

TOMMY WOLFSCHLAG

1-2-3-4 CSMC.





A decorative graphic on the left side of the page. It consists of two vertical lines of different shades of gray. A light gray diamond shape is positioned behind the large letter 'U'.

U

nderclassmen

Juniors



BILL
ANGER



DONNA
BRINSON



DONNA
DATTILO



RAYMOND
ELLIS



ANN
GOEBEL



WALTER
GREINER



NANCY
GREINER



PHYLLIS
HASSFURDER



JUDY
HERTZ



ANNETTE
HOFFMAN



JOHN
HUGEBACK



MARY
JACKSON



FRED
KOEHLER



KENNY
KESSLER



BOB
MILLER



JIM
McKENNA



CHARLIE
RICKETTS



JUDY
RIEHL



CHARLIE
POTTER



JOSEPH
SCHWAB



RICHARD
SHIPLEY



SHARON
SOMMER



DORTHY
WOLFSCHLAG



LORETTA
STAAB

Sophomores



GEORGE
ACKERMAN



BOB
BOTT



CHARLES
BRAWNER



BILL
BRAWNER



COTY
CHESTERFIELD



CHARLES
CRAIG

S o p h o m o r e s



Lenoard
Dattilo



Pete
Dattilo



Jonn
Driskell



Pat
Goley



Bill
Hardigg



Ivan
Hawk



Dee
Hertz



Janet
Hill



Janet
Hock



Mary
Howley



Harry
Jones



Bobby
King



Johnny
Kirchner



Leona
Matern



Judy
McCarty



Sandy
Nolte



John
Schafer



Bob
Schmidt



Janie
Schwacke



Lois
Smith



Joe
Sorg



Sally
Stanner



Susan
Stanner



Adelaide
Thacker



Roserita
Thorpe



Paul
Torline



Andy
Wolfschlag



Bob
Yungman

F r e s h m e n



Sherry
Ackerman



Carol
Anger



Jerry
Barnes



Marjie
Behr



John
Bott



Larry
Burgmeier



Pat
Dattilo



Carolyn
Davis



Nancy
Davis



Butch
Day



Judy
Dierkes



Mary
Duncan



Jerry
Eder



Barbara
Gaines



Jean
Goley



Carolyn
Gosman



Judy
Handlon



Jimmy
Henry



Hettie
Hock



Bob
Jackson



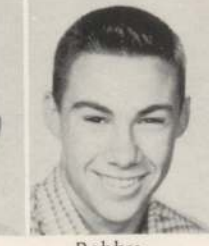
Margaret
Kalb



Bonnie
Kaelin



Richard
Kelly



Bobby
Lockridge



John
Lorenz



Pat
Lothspeich



Jimmy
McCoy



Wanda
Netherland



Bill
Potter



Betty
Rousch

F r e s h m e n



Carolyn
Schwab



Stephan
Smith



John
Smith



Stewart
Smith



Patty
Taflinger



Philip
Torline



Mike
Vaughn



Mary
Weisenback



Mary
Winkel



Jimmy
Willick



David
Wolfschlag



Patty
Worachek



Nellie
Lapine



Dolores
Pflum



Toni
Pierce

Patrons

JOHN H. HOFFMAN
Madison, Indiana

DON'S BARBER SHOP
Madison, Indiana

RENNES LAUNDRY
Madison, Indiana

WESTERN AUTO
Madison, Indiana

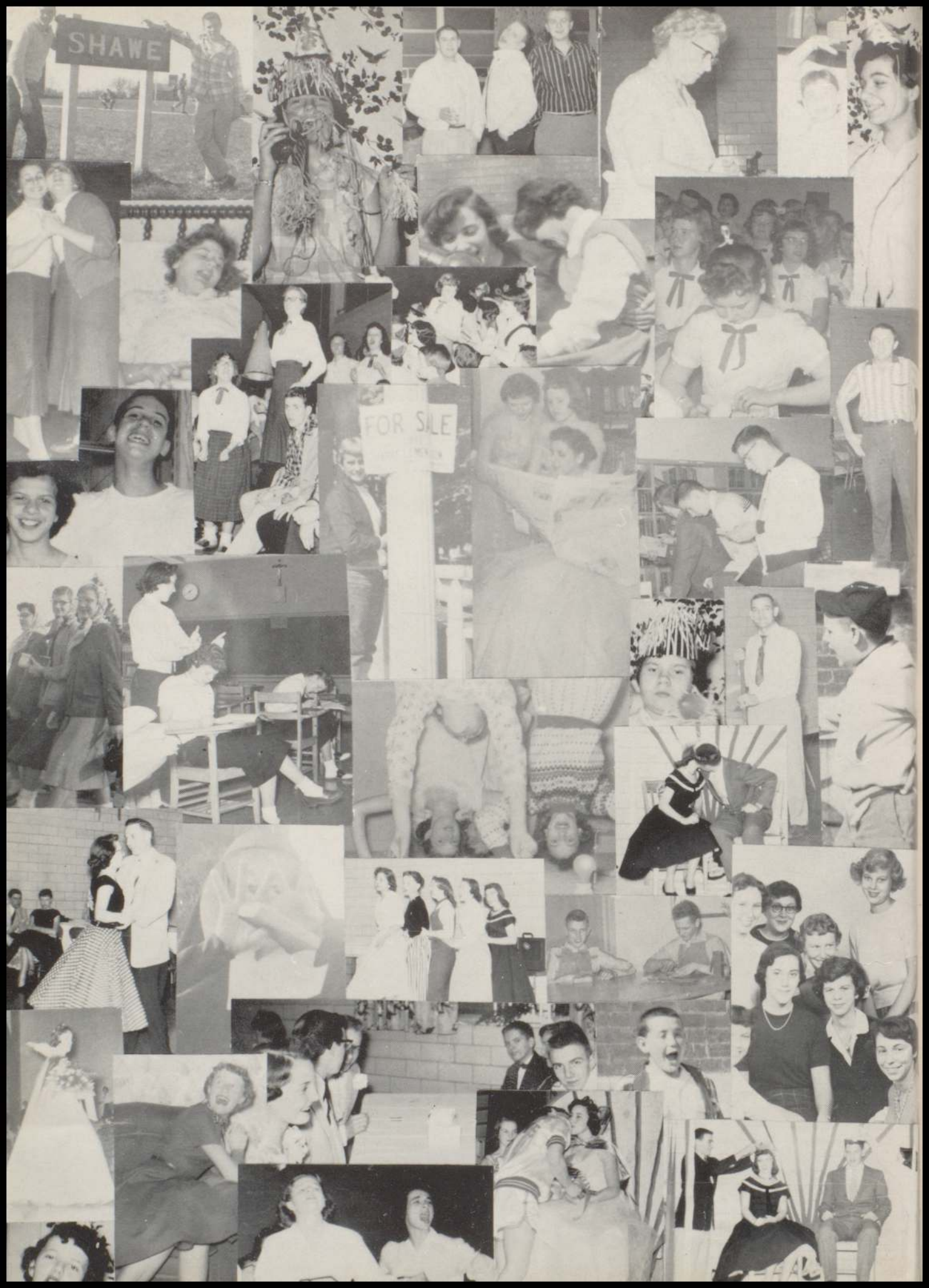
WISBECKERS
Madison, Indiana


NICHOLAS J. POTTER
Madison, Indiana

JUNIOR CLASS
Shawe Memorial

SOPHOMORE CLASS
Shawe Memorial

FRESHMAN CLASS
Shawe Memorial





A *thletics*



*B
a
s
k
e
t
b
a
l
l*

First row, left to right: Jim McKenna, Fred Koehler, Paul Fewell, George Thorpe, Richard Shipley, Ronald King, Coach, Jack Dwyer; Mike Dattilo, Charles Ricketts, Paul Messmore, Charles Potter, Father Senefeld.





*C
h
e
e
r
l
e
a
d
e
r
s*

COTY
CHESTERFIELD

PAT
DATTILO

DONNA
DATTILO

DEE
HERTZ





*T
r
a
c
k*

Lower row, left to right: Coach, J. Dwyer; B. Lockridge, W. Greiner, J. Lorenz, R. Kirehner, P. Dattilo, J. McKenna, J. Barnes, K. Kessler, M. Vaughn, M. Dattilo, J. Kirchner, Top row: C. Ricketts, G. Thorpe, F. Koehler, L. Dattilo, B. Youngman, I. Hawk.



*B
a
s
e
b
a
l
l*

Lower row, left to right: P. Dattilo, J. McKenna, J. Dattilo, F. Koehler, B. Lockridge, G. Ackerman, Coach, J. Dwyer; W. Greiner, G. Eder, J. Lorenz, H. Jones.



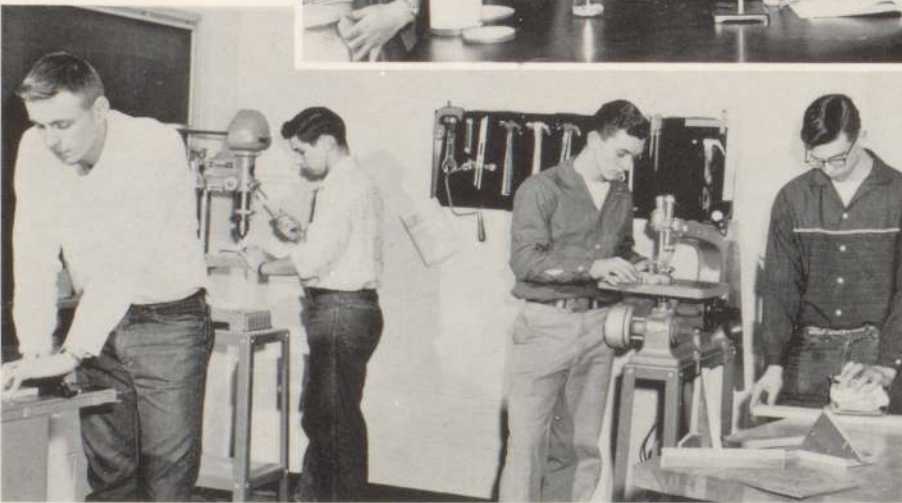
Activities

Classes



A stitch
in time
saves
nine

Boom!!!
A chemical
reaction



Sawing and
sanding
make noisy
seniors

Books lay
the foundation
of knowledge





Artists
at
work

The biology
students
take a
peep



The Band



Senior Play

SEVENTEENTH SUMMER

THE CAST

Angie - - - CAROLYN GERTH
Jack - - - - RONNIE KNOEBEL
Kitty - - - - MARY C. BEHR
Margaret - MARGARET NORRIS
Art - - - - ROBERT KIRCHNER
Lorraine - - JUDY HAMILTON
Martin - - - - PAUL FEWELL
Margie - - - MARTHA HUNGER
Mr. Morrow - - RONNIE KING
Mrs. Morrow - - RITA SOMMER
Sound Effects - JAMES ROWLETT



Mary's Day



Procession

Dedication





"A beautiful ballroom for a wonderful night"



Prom





The End of Our Journey
The Hilltopper Staff

GERRY SELIG

RONNIE KNOEBEL

BOB KIRCHNER

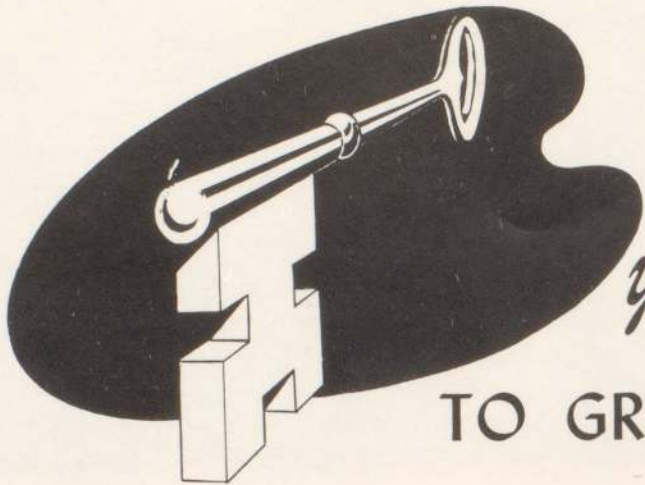
RITA SOMMER

ANN HILLEN

MARGARET NORRIS

CAROLYN GERTH

A *Advertisers*



your key...

TO GREATER VALUES

KOEHLER

SUPPLY COMPANY

HURRY!



to

China

GROCERY
&
GARAGE

China, Indiana

HERTZ
SHOE SHOP

Madison

Indiana



AND
SAVE
AT

VEGETABLES



Lowest Prices

DATTILO'S

FRUIT COMPANY

SCHNABLE'S

JEWELRY

Madison, Indiana



CLAPP

MOTOR CO.

Madison, Indiana



LYON'S

FLOWER
SHOPPE

Madison
Indiana

SAVE \$
\$ \$
\$

INDIANA

OUTFITTING CO.
Madison, Indiana

BRAWNER'S
REPAIR
SHOP

You Break It
We Fix It

Canaan
Indiana



MADISON
PUBLIC SERVICE CO.



"Reddy Is Always Ready"

SAMPLE
ICE CREAM
CO.

Madison
Indiana



SERVICE



VOLZ
CHEVROLET
INC.
Madison
Indiana

MUSTER'S

FRUIT MARKET
Madison, Indiana

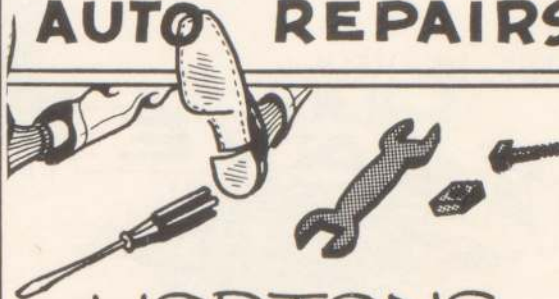


For **GOOD FOOD**
try

JACKSON'S
RESTAURANT

Madison, Indiana

AUTO REPAIRS



HORTONS
GARAGE

Madison, Indiana



**NATURAL
GAS
SERVICE**

Madison
Indiana



**JOHN
KNOEBLE
AND
SON**

One of Southern Indiana's
Finest Clothing Stores
for Men and Boys

Open Every Day



**STAR FOOD
STORE**

Madison
Indiana



Smith's

**VARIETY
SWEET
SHOPPE**

Madison
Indiana



**OSCAR
C.
BEAR**

Madison
Indiana

LET US HELP



Your Money

MADISON
BANK & TRUST CO.

Madison, Indiana

Zenith
Motorola

Philco
RCA

MADISON
RADIO SERVICE

Madison, Indiana

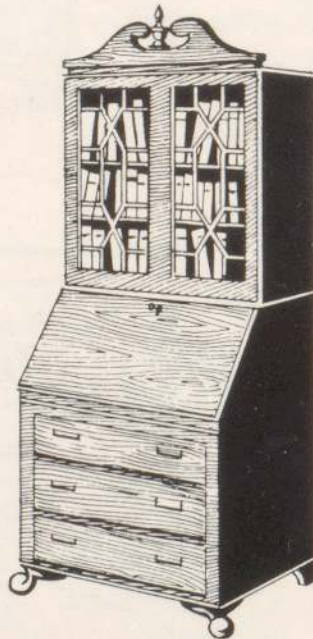


McCaughey & Son
North Vernon, Indiana



LODGE
BROTHERS
FURNITURE & APPLIANCES

Madison
Indiana



DEMOCRAT PRINTING CO.

Madison, Indiana

THE
MEN'S
STORE

North Vernon
Indiana





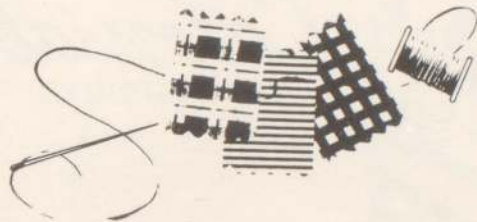
THE
MAJOR
T
JESTER
DEPT. STORE

Madison, Indiana

PEARSON
GROCERY
North Madison, Indiana



THE FABRIQUE SHOPPE



Madison, Indiana



Hentz's

BAKERY

Madison, Indiana

MADISON
FLORAL SHOPPE
Madison, Indiana



Hurry! Hurry! Hurry!

Get Some Flowers Today

DAIRY
QUEEN

North Vernon, Ind.



Bensinger's



of
Madison

EDER'S
GROCERY

"We Deliver
3 Times
Daily"

North Vernon
Ind.



Colonial
HATCHERIES

Madison, Indiana

SCHULTZ
BROTHERS

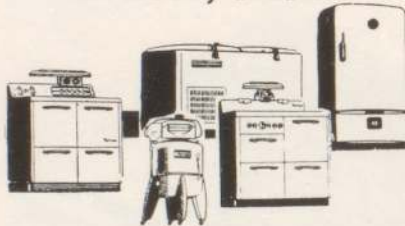
SHOE SHOP



Madison, Indiana

BLUE RIBBON APPLIANCE
STORE

General Electric Appliances
Madison, Indiana



TECH
DRY GOODS

Vernon, Indiana



BENNETT

MOTORS

Oldsmobile - Cadillac

Madison, Indiana



"We Telegraph Flowers"

House of Flowers

Madison, Indiana



STANDFORD

MOTOR COMPANY, INC.

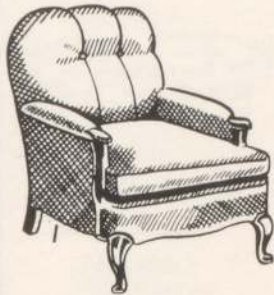


Madison, Indiana



THE
NANCY
LEE
SHOP

Madison, Indiana



GANS

FURNITURE
MARKET

Madison
Indiana

WHITE STAR LINES

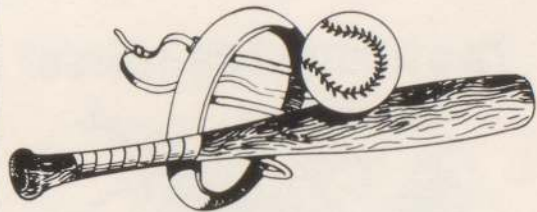


Madison, Indiana

PEPSI-COLA BOTTLING CO.



Madison, Indiana



LODGES

HARDWARE
Madison, Indiana



BUSH'S
GROCERY

BEST POLICY

AT ALL
TIMES

RICHARD M.
JOHNSON
AGENCY

Madison
Indiana





FIRST NATIONAL BANK

Madison, Indiana



ANDRES APPLIANCE SHOP
Crosley
Bendix
Madison, Indiana

HURRY!



to
KELLY BROS.
ACE HARDWARE
Madison
Indiana

YOUR SEARCH ENDS



IRWIN'S
STORES



THE
BIG
STORE

North Vernon
Indiana



Bumen's
SERVICE STATION

Madison, Indiana

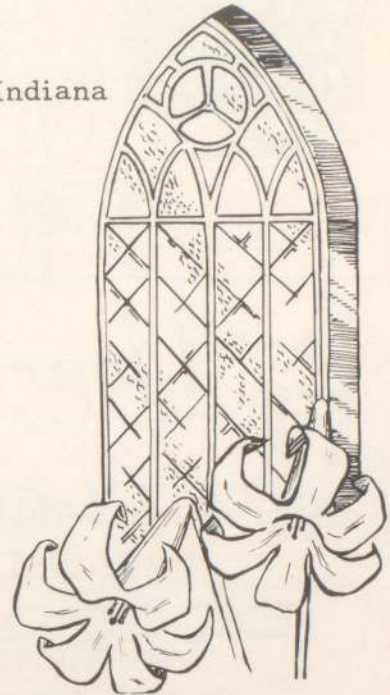


Riehl & Company

Madison
Indiana

VAIL
FUNERAL HOME

Madison, Indiana



BEST POLICY

AT ALL
TIMES



Interstate

FINANCE

Madison, Ind.



COKMAN'S
HAT SHOP

Madison, Ind.

INVESTIGATE



REED'S

LAUNDRY & DRY CLEANERS



Central
HOTEL



Go to
THE
HILLSIDE
HOTEL



Your



DEPENDABLE
DRUGGIST

ROGERS
DRUG STORE

Madison, Indiana



at the

*Quick
Freeze*

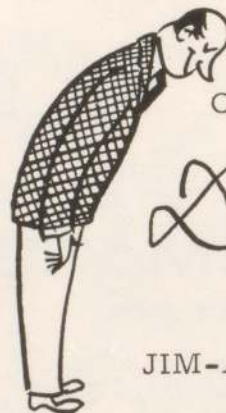
LOCKER CO.



*You
will be
Surprised*

MOORE'S

Madison, Indiana



Compliments of

Demaree's

MEN SHOP
and
JIM-ANDY BOY'S SHOP



C.G. Hunger

FEED COMPANY

Madison, Indiana



FASHION
CLEANERS

Madison, Indiana

LAST MINUTE
NEWS



MADISON
COURIER

Almost Everybody Reads the
COURIER



MADISON SAVING & LOAN ASSO.
Madison, Indiana



Choice
MEATS

Schnable

MEAT MARKET
Madison, Indiana

LYTLE

MORTUARY

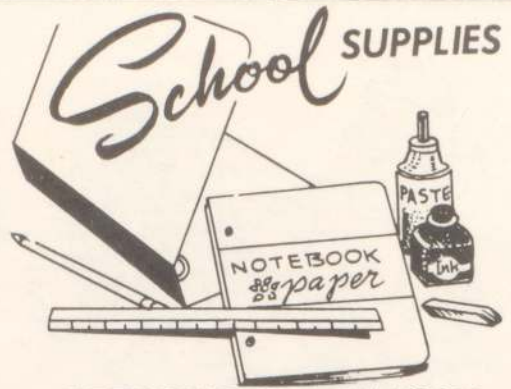
Madison, Indiana



Better Values

*Knoebel &
Bird*

Madison, Indiana



STEINHARDT & HANSON
Madison, Indiana

Compliments of

Dr.

Paul Jewell

Madison, Indiana

BETTER GROCERIES



BOB

ANGER'S
GROCERY

Madison, Indiana

SAVINGS



NORTH
MADISON
STATE BANK

North Madison, Indiana

Super Service
at

KRIDER

STUDIO

MR. AND MRS. WARD C. POOR, Mgr's.

Madison, Indiana

DON'T WORRY
..GET HER GIFT



at

STONER'S
DEPT. STORE

North Vernon, Indiana

latest fashions

PARIS
STYLE

Madison, Indiana



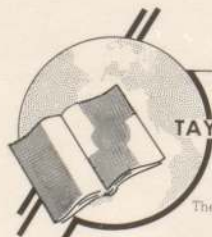
SHAWE
MEMORIAL
HIGH SCHOOL

Madison, Indiana

BETTER GROCERIES



at
ANGER'S
GROCERY



LITHOGRAPHED BY

TAYLOR PUBLISHING CO.

DALLAS • TEXAS

The Best Yearbooks are TAYLOR-MADE



